

Carbon

Brush

Aupac New Grade Information

 **JAPAN MADE**





3 Less

Improvement

Point1: Mechanical noise **Less**

Point2: Brush wear **Less**

Point3: Ash & SiO₂ **Less**

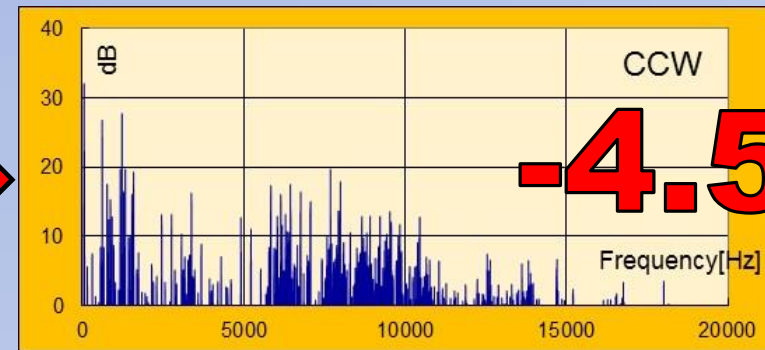
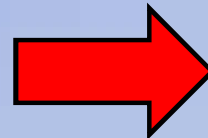
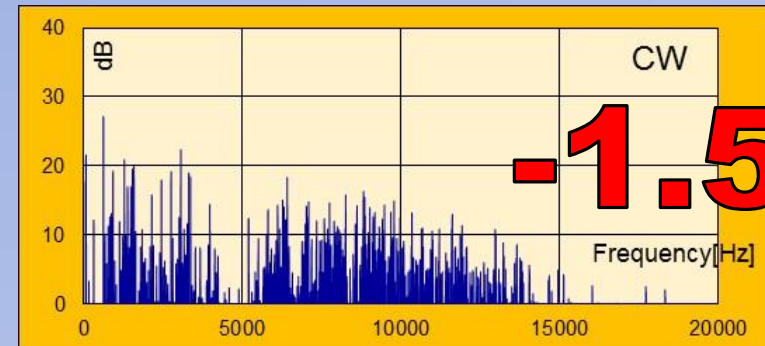
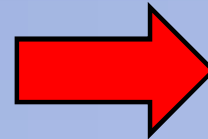
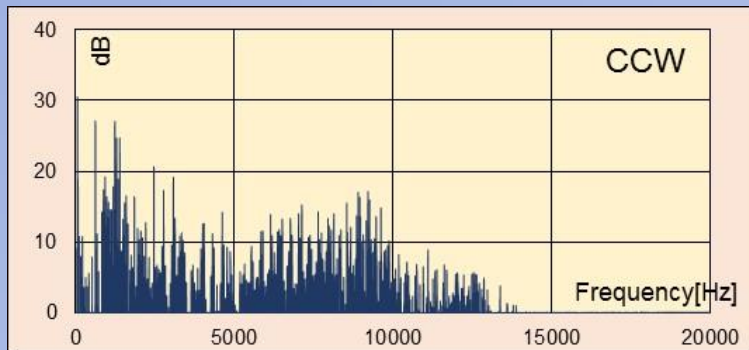
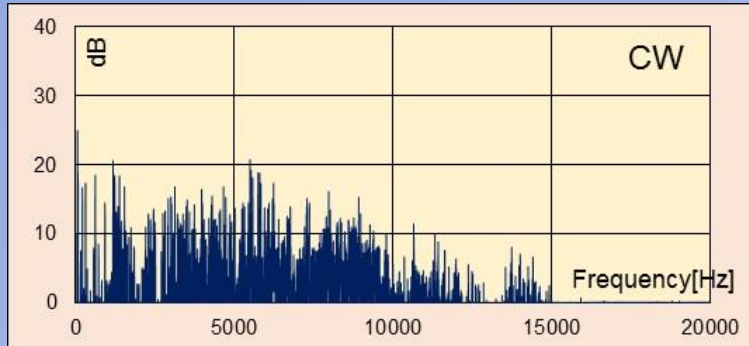


Mechanical noise

LESS

Mechanical Noise	CW			CCW		
Current Grade	Ave.	Max.	Min.	Ave.	Max.	Min.
CTS-874SR	40.1	40.4	39.5	42.1	42.6	41.8

Mechanical Noise	CW			CCW		
Improve Grade	Ave.	Max.	Min.	Ave.	Max.	Min.
CES-603MF	38.5	39.0	38.3	37.6	37.8	37.4

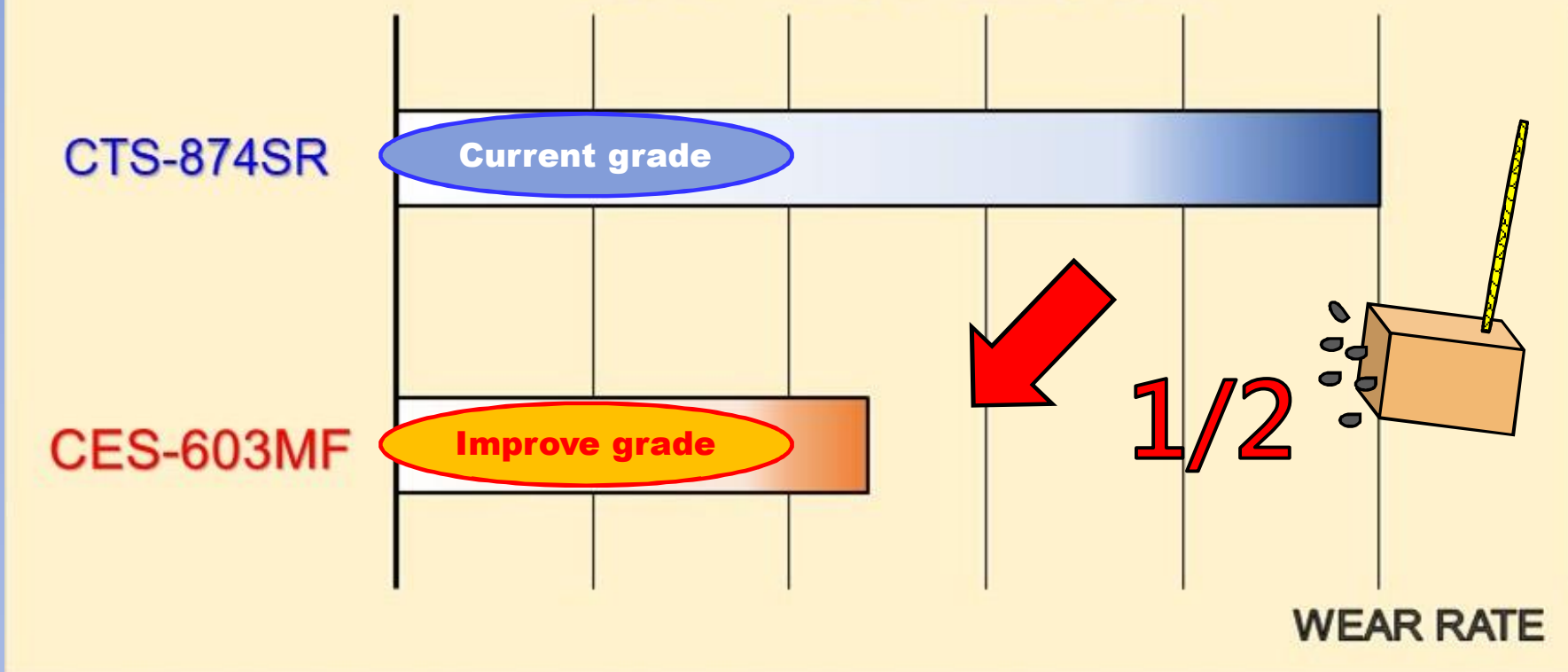


TEST Condition :
Voltage:13V
Current:16A
R.P.M. :5000rpm

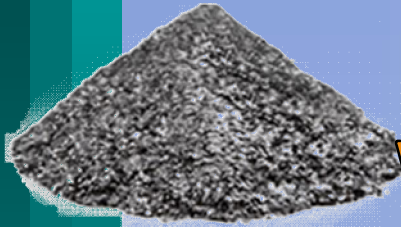
Brush Wear

Less

LIFE TEST RESULT



Ash & SiO₂



We have used high quality graphite already,

But Natural graphite contains some small amount of SiO₂

LESS

What' more, the improve grade have used higher quality graphite.



The graphite used this grade contains little SiO₂

In comparison of simple ash content, it is about one-fifth of the current material.

SiO₂ and Ash less has affected more stable Performance and Noise.



Ash%
1/5

Please improve your motor performance by using our **Aupac carbon brush.**

**Thank you
for reading.**